



Transmation

Generate pressure where you need it with the Model 1099 Precision High-Pressure Pump. Calibrate higher pressure transmitters & low pressure switches without bottle gas or hydraulic fluid.

Get to the pressure you need faster and easier than with older style pumps. A large diameter cylinder and compound mechanism combine to generate 100 psi two to four times faster. With just a few additional squeezes the Model 1099 gives you up to 600 psi.

Effortlessly adjust pressure to 0.001 psi with a fine adjustment vernier. Top adjusting pumps have vernier adjustment which become harder to turn as the output pressure increases. The Model 1099 has a "balanced pressure" adjustment which is easy to turn at any output pressure.

Gently lower the pressure by opening the patented micro bleed valve 1/4 turn, which releases the pressure very gradually. Open the micro bleed valve fully to quickly vent the pressure. The bleed valve has no seat to deform, eliminating the problems associated with needle valves on other pumps.

Use the Model 1099 independently or in conjunction with a Transmation pressure calibrator or other pressure indicator, forming a convenient source/indicator with psig, inches of water or kg/cm² ranges.

Dual output ports allow simultaneous pressure application to two devices. For example, connect one port to the pressure calibrator—providing digital verification of the generated pressure—and the second port to the device being checked or calibrated.

Pressure connections are made through two 1/4" NPT internally threaded fittings. Compatible media are any non-conductive, non-corrosive, instrument-grade clean air or inert gas.

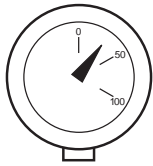
Generate higher pressures with less effort using the Model 1099. Its long stroke and large piston require 30% less effort than other hand pumps to get to 100 PSI. 50% less effort is required to get to 300 PSI.

The pump's moderate size and squeeze-action mechanism permit easy, one-handed operation at any angle. Although the unit is lightweight (less than two pounds), it is ruggedly constructed to withstand typical field use. The pump body is nylon, which resists chemicals and protects against impact damage and corrosion. The output ports and piston rod are stainless steel. Model 1099's simple design and quality construction ensure a long service life with virtually no maintenance. When cleaning is required the Model 1099 can be stripped down, lubricated, have new filters & O-rings installed and reassembled in 10 to 15 minutes.

High Pressure Pneumatic Pump Model 1099-600



- **Portable pressure source**
Generate up to 600 psig, 41 kg/cm² or 4135 kPa
- **Two models cover a wide pneumatic range**
Model 1099 -600 – 600 psig, 41 kg/cm² or 4135 kPa
- **Coarse and fine adjustments**
Provide resolution to 0.001 psig
- **Dual output ports**
Simultaneous connection to two devices
- **Convenient one handed operation**
Functions at any angle



Producing pressure

- 1) Connect one of the Model 1099's ports to the instrument to be calibrated or checked. Use small-diameter tubing as short in length as possible (this will maximize the pressure adjustment range). An auxiliary port is provided for simultaneous output to a second device, e.g., application of pressure to an instrument or system under test and to a pressure calibrator to measure the actual pressure output. If the auxiliary port is not used, it should be securely plugged.
- 2) Set the FINE ADJUST knob to the full counterclockwise position.
- 3) Turn the bleed valve knob fully counterclockwise to relieve all system pressure and zero any measuring devices.
- 4) Turn the bleed valve knob fully clockwise to close.
- 5) Repeatedly squeeze the handles to generate just under the desired pressure.
- 6) Use the FINE ADJUST knob to bring up the pressure to the precise level. The FINE ADJUST knob can adjust the pressure up from and down to the pressure generated by squeezing the levers.
- 7) Use the BLEED VALVE to lower the pressure from the pressure generated by squeezing the levers. Opening the BLEED VALVE 1/4 turn will lower the pressure very gradually. Opening it 1/2 turn will release the pressure faster and opening it 3/4 turn will quickly and safely release all the pressure in the system.



Warning

It is imperative that all system pressure is relieved prior to making any connections or disconnections. Failure to relieve system pressure could result in serious personal injury or equipment damage. Even nominal pressure values can generate extreme force if fitting or tubing failure occurs due to improper installation or usage. Since the Model 1099 is capable of generating pressures exceeding 100 psig, it is important that all pressure connections and test procedures be done by qualified service personnel, according to standard engineering practices, to prevent possible personal injury or equipment damage.

Temperature considerations

Since the pressure change of a contained volume of gas is directly proportional to absolute temperature, temperature control is critical when using the Model 1099 with any high-resolution measuring device. Tubing should be kept away from heat sources (i.e., lamps, operating electronic equipment, excessive hand contact, etc.) as well as from heat-dissipating structures (i.e., open windows, air conditioning vents, etc.) to minimize temperature variations that might induce errors. Air is compressed when the Model 1099's actuating levers are squeezed. This compression causes some heating of the air as it is forced into the system. Consequently, a noticeable decrease in pressure—caused by the cooling of the newly compressed air—may occur immediately after



cessation of pumping.

Leak prevention and detection

In order to obtain maximum pressure indication stability, leaks must be avoided. It is strongly recommended that either Teflon® tape or commercial pipe sealant be used at all tapered fittings and connections. If Teflon® tape is used, care must be taken that the proper amount is applied. Excessive tape may fray and cause plugging of relief valves, orifices, nozzles, etc. Overuse of pipe sealant may cause similar problems.

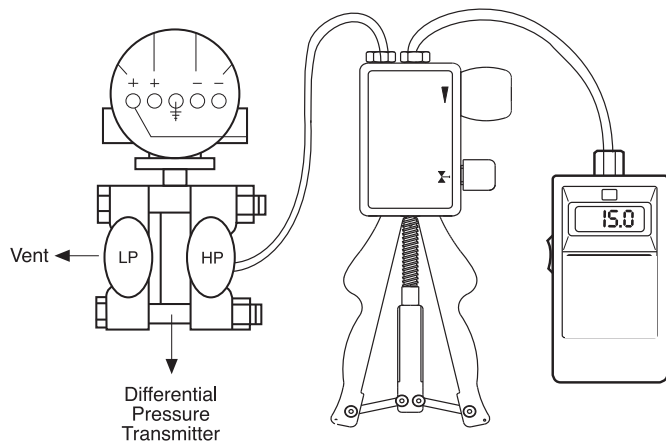
External equipment should also be checked carefully for leaks. Process connections, flange bolts, and vents must be tightly closed. Defective gaskets, leaking valves, and damaged diaphragms are all potential sources of leaks.

For detection of very small system leaks, the traditional soap bubble method may not be sufficient. Halogen leak detection devices may be required when using highly sensitive pressure calibration equipment.

Connections

To install a pressure fitting in the Model 1099:

- 1) Turn the Bleed Valve counterclockwise to bleed any pressure
- 2) Remove the stainless steel port fitting from the pump body
- 3) Place the stainless steel port fitting in a vise and install a pressure fitting into the port fitting.
- 4) Hold the pump with the handles up and insert the stainless steel port fitting into the pump. Make sure that the O-ring and filter do not fall out.
- 5) Snug the fitting assembly using the wrench but do not overtighten. The O-ring compresses slightly to provide the seal. Overtightening may damage the O-ring or pump body.



Servicing the pump

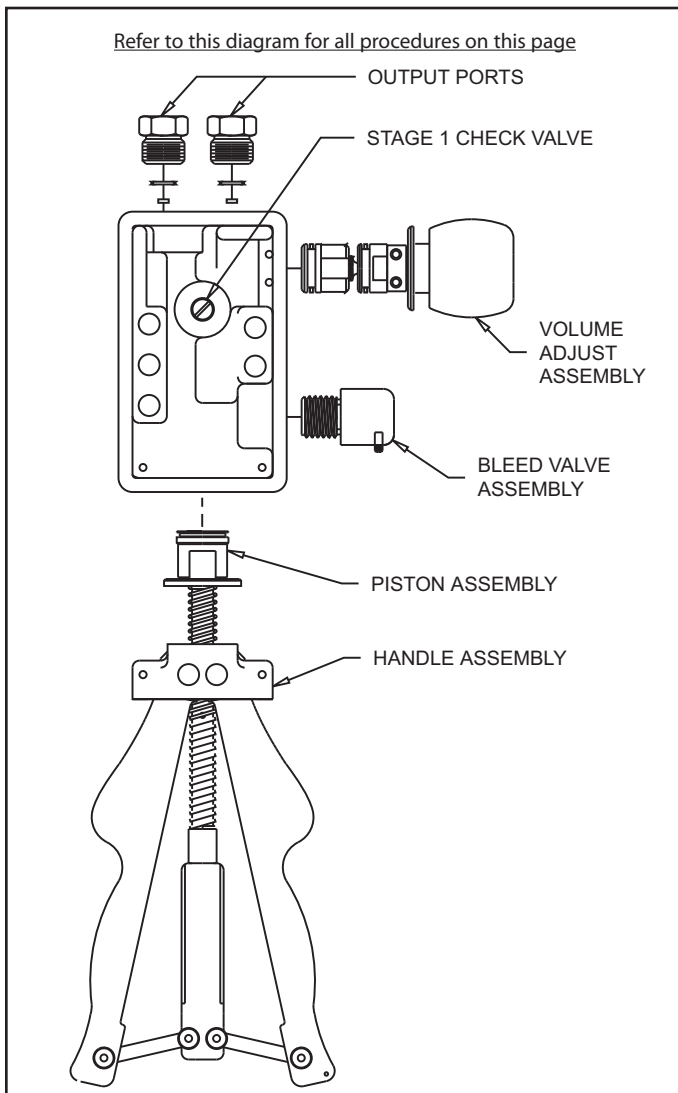
Please read before attempting any repair of this product

Field service procedures for the Model 1099 include replacing the O-rings, filters, and replacing damaged assemblies. It is strongly recommended that units requiring service beyond the scope of the procedures described below be returned to the nearest service location. Unauthorized repair or replacement of components may impair accuracy and/or void the warranty. No equipment will be accepted for service unless all process materials have been completely removed from all components by the customer. Contaminated pumps will be returned to the customer for proper cleaning.

NOTE: To prevent clogged internal passageways, exercise extreme care to avoid introducing contaminants into the pump body orifice. It is highly recommended that the following procedure be performed in a clean environment.



Warning! It is imperative that all system pressure be relieved prior to making any connections or disconnections. Failure to relieve system pressure could result in serious personal injury or equipment damage.



Replacing the piston assembly

Tools required: 3/32" Allen wrench; 3/4" wrench; pliers

- 1) Turn the Bleed Valve fully counterclockwise to bleed all air.
- 2) Remove the two cover set screws and remove the cover.
- 3) Using the pliers, remove both handle assembly dowel pins.
- 4) Slowly actuate the handles until the handle assembly "pops" out of the pump body.
- 5) Grasp the steel shaft to prevent turning. Use care to avoid damaging the shaft surface.
- 6) Using the wrench, unscrew the piston. Notice that wrench flats are supplied on the piston.
- 7) Install the replacement piston and snug with the wrench. Do not overtighten.
- 8) Install the handle assembly into the pump body.
- 9) Visually align the handle assembly/pump body dowel holes and install both dowel pins.
- 10) Install the front cover and set screws.
- 11) Check for proper pump operation.

Replacing the volume adjust assembly

Tools Required: 3/32" Allen wrench; Pliers

- 1) Turn the Bleed Valve fully counterclockwise to bleed all air.
- 2) Remove the two cover set screws and remove the cover.
- 3) Using the pliers, remove both volume adjust assembly dowel pins.
- 4) Withdraw the volume adjust assembly from the pump body.
- 5) Install the new volume adjust assembly.
- 6) Visually align the volume adjust assembly/pump body dowel holes and install both dowel pins.
- 7) Install the front cover and set screws.
- 8) Check for proper pump operation.

Replacing the bleed valve assembly

Tools Required: 1/16" Allen wrench; 5/8" wrench

- 1) Turn the Bleed Valve fully counterclockwise to bleed all air.
- 2) Using the Allen wrench, loosen the knob set screw.
- 3) Remove the knob.
- 4) Using the wrench, remove the bleed valve assembly from the pump body.
- 5) If necessary, install new filters in the bleed valve assembly (two filters are stacked on top of each other).
- 6) Orient the pump with the aperture down to prevent the filter or O-ring from being dislodged, then install the bleed valve assembly into the pump body. Snug the fitting using the wrench; do not overtighten.
- 7) Check for proper pump operation.

Replacing a pressure fitting

Tools Required: 3/4" wrench

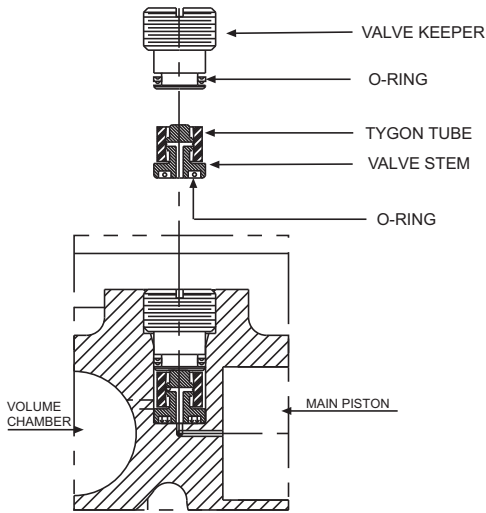
- 1) Turn the Bleed Valve fully counterclockwise to bleed all air.
- 2) Using the wrench, remove the output port fitting from the pump body.
NOTE: It is highly recommended that the output port fitting be removed from the Model 1099 prior to pressure fitting removal or installation. The torque required to remove or install a pressure fitting in the output port fitting may exceed the pump body thread strength.
- 3) Secure the output port fitting in a vise or equivalent, remove the existing pressure fitting, then install a suitable replacement pressure fitting.
- 4) Invert the pump body (e.g. the handles up, the fitting aperture down) to prevent the O-ring or filter from being dislodged from the output port fitting, then install the output port/pressure port fitting assembly into the pump body. Snug the fitting assembly using the wrench; do not overtighten.
- 5) Check for proper pump operation.

Product Specifications

Output range	1099-600: 600 psig, 41 kg/cm ² or 4135 kPa
Resolution	0.001 psig
Pressure connections	Primary and auxiliary ports: 1/4"-18 NPT
Weight	0.9 kg (2 lbs.)
Media compatibility	Non-conductive, non-corrosive, instrument-grade clean air or inert gas
Construction	Nylon pump body; stainless steel output ports and piston rod

Servicing the stage 1 check valve

Tools Required: 3/32" Allen wrench, Large blade screwdriver



- 1) Turn the Bleed Valve fully counterclockwise to bleed all air.
- 2) Remove the two cover set screws and remove the cover.
- 3) Using the screwdriver, remove the valve keeper.
- 4) Invert the pump and remove the brass valve stem.
- 5) Remove the face seal O-ring, Tygon tube, and keeper O-ring from the valve stem.
- 6) Using a suitable lubricant, lube the replacement face seal O-ring and keeper O-ring.
NOTE: When lubricating O-rings, use a silicone-based O-ring lubricant such as Parker Super Lube. Fully wet all O-ring surfaces, then wipe off all excess lubricant.
- 7) Install the replacement face seal O-ring, Tygon tube, and keeper O-ring on the valve stem as illustrated. Center the Tygon tube on the raised ridge of the valve stem.
- 8) Install the valve stem in the proper orientation in the pump body. Verify that the valve stem is seated properly.
- 9) Using the screwdriver, snug the valve keeper. Do not overtighten.
- 10) Install the front cover and set screws.
- 11) Check for proper pump operation.

Recommended spare parts

O-ring/filter kit	100836-009
Output port fittings:	
1/4"-18 NPTF (standard)	100836-231
1/8"-27 NPTF (standard)	100836-232
Output port plug	100836-233
Handle/piston assembly	100836-050

Replacing filters and O-rings

Periodic inspection and replacement of selected O-rings and filters is recommended to ensure proper and safe pump operation. A service kit is available that contains all serviceable filters and O-rings.

Replacing a filter

- 1) Remove the applicable assembly (i.e. Piston Assembly, Bleed Valve, or output port fitting) as instructed in the corresponding section.
- 2) Remove the old filter(s).
- 3) Verify that the filter seat is free from debris or contamination, then install the replacement filter(s).
- 4) Install the assembly as described in the corresponding section.

Replacing an O-ring

- 1) Remove the applicable assembly (i.e. Piston Assembly, Stage 1 Check Valve, Volume Adjust, Bleed Valve, or output port fitting) as instructed in the corresponding section.
- 2) Remove the old O-ring(s).
- 3) Using a suitable lubricant, lube the replacement O-ring(s).
NOTE: When lubricating O-rings, use a silicone-based O-ring lubricant such as Parker Super Lube. Fully wet all O-ring surfaces, then wipe off all excess lubricant.
- 4) Install the replacement O-ring(s).
- 5) Install the assembly as described in the corresponding section.

Warranty

Transmation products are warranted to be free from defects in material and workmanship (excluding fuses, batteries and leads) for a period of one year from the date of shipment. Warranty repairs can be obtained by returning the equipment prepaid to our factory. Products will be replaced, repaired, or adjusted at our option. Transmation gives no other warranties, including any implied warranty of fitness for a particular purpose. Also, Transmation shall not be liable for any special, indirect, incidental or consequential damages or losses arising from the sale or use of its products.

No pump will be accepted for service unless all process materials have been completely removed from all components by the customer. Contaminated pumps will be returned to the customer for proper cleaning.

Transmation -----
PO Box 837, Everett, WA 98206
1520 75th Street SW, Everett, WA 98203

For more information:
U.S.A. (800) 260-5492
Fax (800) 265-2863
Service fax (425) 446-6331
E-mail: sales@transmation.com
Web: www.transmation.com

Ordering information
High Pressure Pneumatic Pump to 600 psi

Part No.
1099-600